

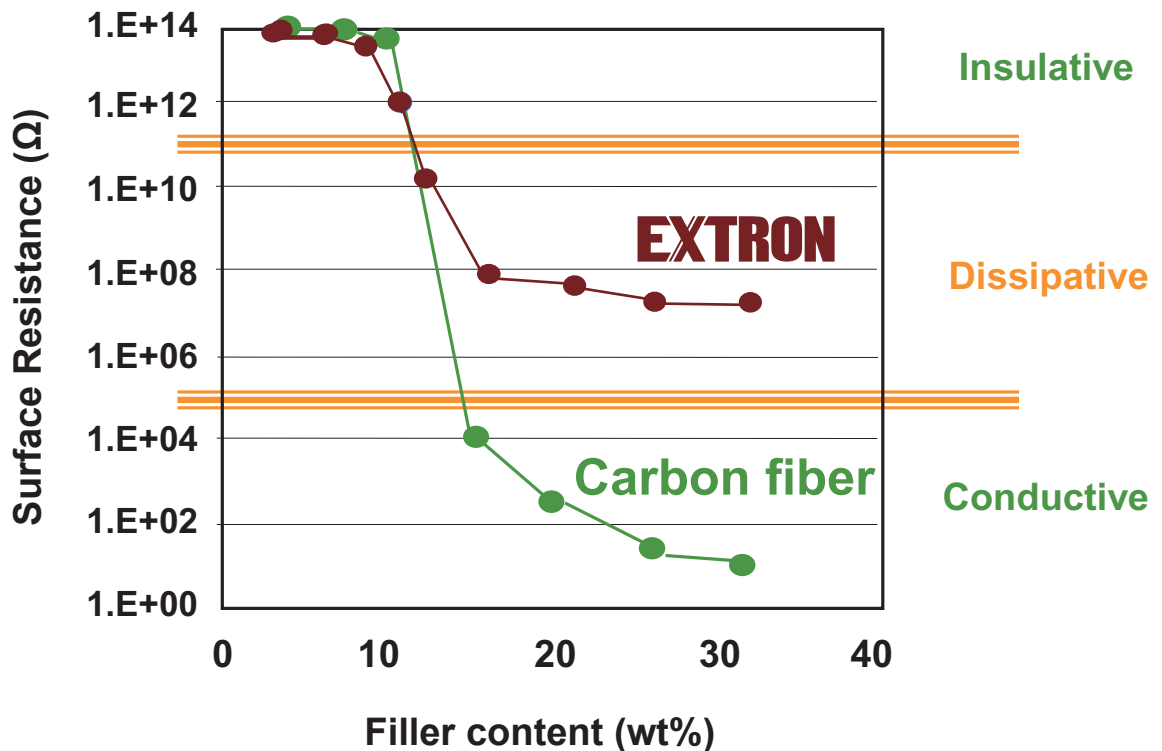
Abstract

- Kureha Extron developed Krefine Special Carbon Material made from petroleum pitch.
- Krefine Special Carbon Material has the unique electrical property and less density than those of general carbon materials.
- Krefine Special Carbon Material is able to control product's surface resistance precisely, and to lighten product weight.



Characteristics

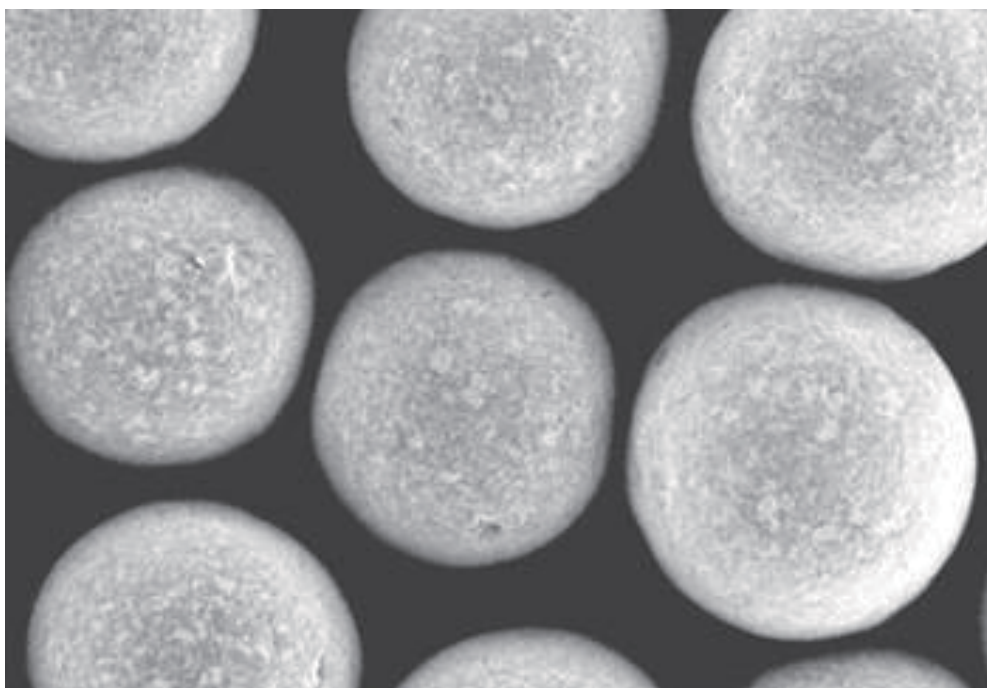
- Comparison of surface resistance between carbon fiber filled polymer material and special carbon filled polymer material



Sphere Properties for Krefine Special Carbon Material

Properties	Method	Units	Krefine Special Carbon	
			Powder	Bead
Carbon Content	JIS K7194		>90%	>90%
Volume resistivity		$\Omega \cdot \text{cm}$	E+07	E+07
Density		g/cm^3	1.4	1.4
Bulk specific gravity		g/cc	0.53	
Mean diameter		μm	22	500
Shape			Granular	Sphere

Information Photo of Krefine Special Carbon Material (Beads)



All technical information of Kureha Extron's products is based upon tests reliable and practical field experience. Kureha Extron Co., Ltd does not guarantee the accuracy or completeness of this information Photo of Krefine Special